



COMMON GROUND SOCIETY™ IN PARTNERSHIP WITH
COMMUNITY FOUNDATION OF SONOMA COUNTY
PROUDLY PRESENTS:



Parent Support Group led by a Licensed Professional

Join us for our first group as we work through parenting a child with unique needs, together. From there we will develop a schedule of sessions based on what our community needs are.



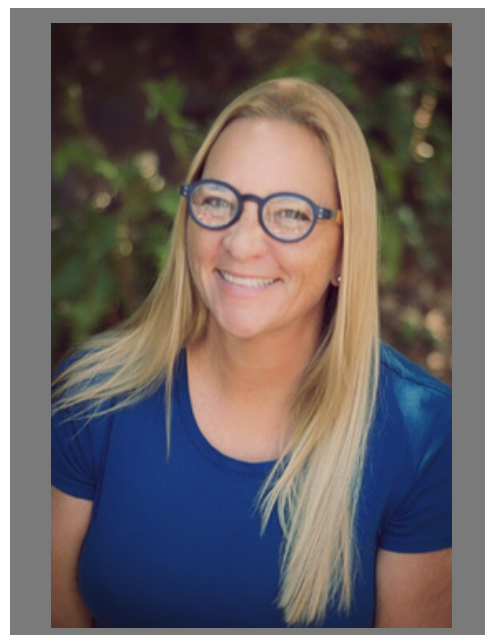
Join us!

August 14, 2023
5 PM - 7 pm
85 Brookwood Ave. STE. 12
Santa Rosa

About Pamela M. Colbert

Licensed Clinical Social Worker, Lic. #111983, PPS,
Infant Parent Mental Health Specialist,
Parenting Education/Support Specialist,
Adolescent Specialist, Lactation Specialist

Pamela has worked with Sonoma County families and the community for over 20 years as a Licensed Clinical Social Worker, credentialed School Social Worker, certified Infant Parent Specialist, certified Parent Educator and a certified Lactation Specialist. Prior to venturing into private practice, she has worked with several Sonoma County community agencies such as the Early Learning Institute, California Parenting Institute and Lifeworks Sonoma County. Most recently she was a School-Based Therapist at Santa Rosa High School for the special education program called Counseling Enhanced Program.



PRE-REGISTRATION REQUIRED:

[HTTPS://LINK.EVOLVESYSTEMS.CO/WIDGET/BOOKINGS/PARENTSUPPORTGROUP](https://link.evolvedsystems.co/widget/bookings/parentsupportgroup)



COMMONGROUNDSOCIETY.ORG